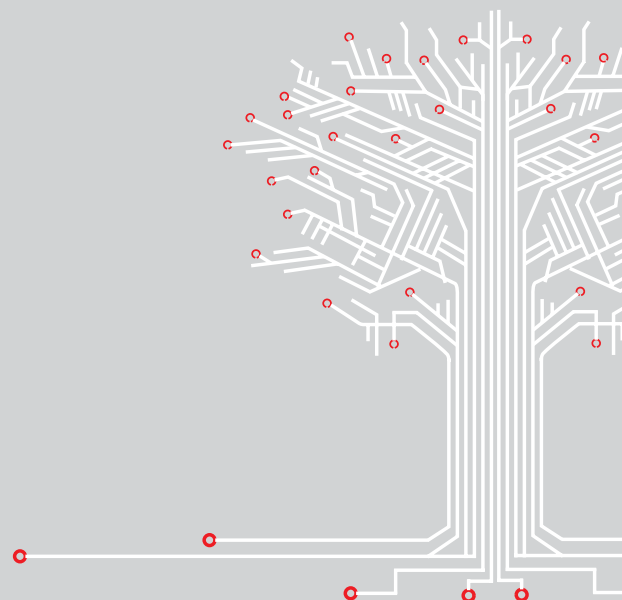


**A.E.B.**<sup>®</sup>

ALTERNATIVE FUEL ELECTRONICS



INJECTOR RAILS 





ALL OF OUR RAILS ARE SUITABLE FOR BOTH CNG AND LPG CONVERSIONS

## RAIL INIETTORI

The AEB rails are electro-injectors, whose primary function is that of batching the gas fuel (LPG/CNG) inside the engine. Ongoing research and a high level of automation of the production process have led to the highest precision and accuracy in the rail performance. By optimising the opening and closing times of the injectors, the vehicle's performance and emissions are the same as those of a vehicle running on petrol at all engine speeds.

AEB injectors stand out for their silent operation, and their constructional design, which has been studied to offer an high tolerance to fuel impurities.

We offer two models:

- ALUMINIUM
- TECHNOPOLYMER, lighter and with an advantageous quality/price ratio.

Both models are equipped with interchangeable nozzles, made of brass (for aluminium rails) and polymer (for technopolymer rails). They make our rails extremely versatile because they can be adapted to all types of vehicles on the marketplace. Rail maintenance is straightforward thanks to the use of specific tools supplied by AEB.

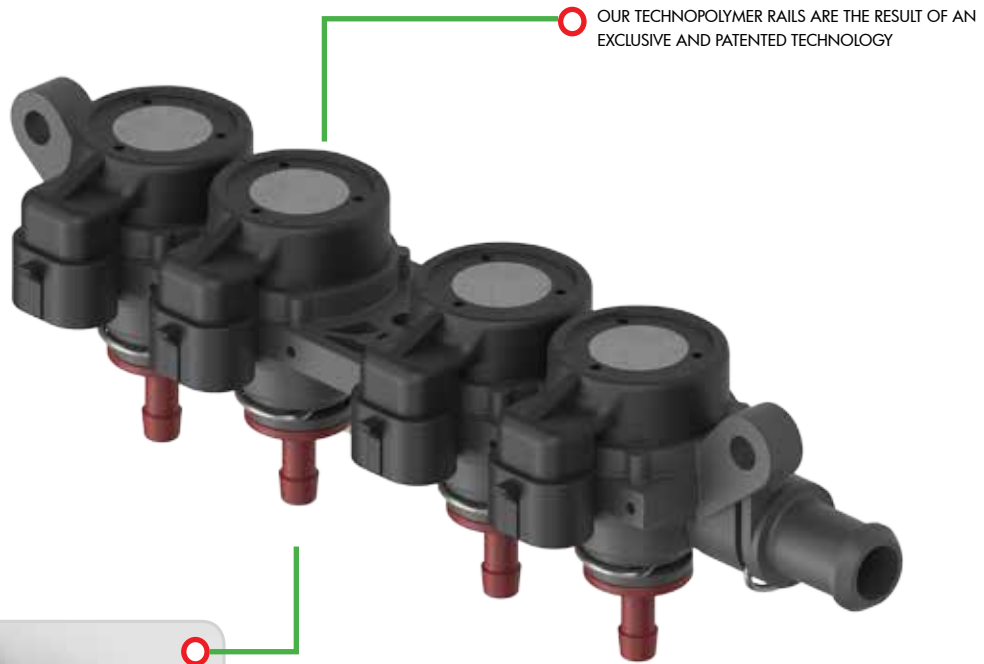
The rails of AEB are also pre-arranged to fit an optional Gas temperature sensor (which is not necessary if the system includes an AEB PT Map sensor).

## MODELS

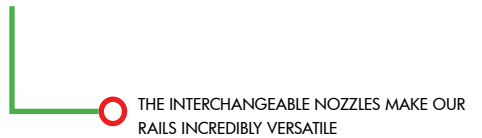
TYPE	CODE			
	4 INJECTORS	3 INJECTORS	2 INJECTORS	NOZZLES Ø mm
ALUMINIUM WITH REMOVABLE NOZZLES	AEBINJR4	AEBINJR3	AEBINJR2	1.5, 1.8, 2.0, 2.2, 2.4, 2.6, 2.8, 3.0
ALUMINIUM NOISELESS WITH REMOVABLE NOZZLES	238619000	238613000	238628000	1.5, 1.8, 2.0, 2.2, 2.4, 2.6, 2.8, 3.0
POLYMER NOISELESS WITH REMOVABLE NOZZLES	238631000	238637000	238635000	1.6, 1.8, 2.0, 2.2, 2.4, 2.6

## ACCESSORIES KIT

RAIL TYPE	KIT CODE						
	10 CYL	8 CYL	6 CYL	4 CYL	2+2 CYL	3 CYL	2 CYL
ALUMINIUM	AEBINJKTR10	AEBINJKTR8 (Ø10) AEBINJKTR8-1 (Ø12) 620500165 (Ø14)	AEBINJKTR6 (Ø10) AEBINJKTR6-1 (Ø12) 620500164 (Ø14)	SAINJ001 (Ø10) SAINJ001-1 (Ø12) 620500162 (Ø14)	AEBINJKIT4B	SAINJ004 (Ø10) SAINJ004-1 (Ø12) 620500163 (Ø14)	
ALUMINIUM WITH PTMAP				620500131 (Ø10) 620500132 (Ø12) 620500133 (Ø14)	620500193	620500134 (Ø10) 620500135 (Ø12) 620500136 (Ø14)	
POLYMER FOR PTMAP			620500203 (Ø12) 620500204 (Ø12)	620500153 (Ø10) 620500154 (Ø12) 620500155 (Ø14)	620500194 (Ø10) 620500195 (Ø12) 620500196 (Ø14)	620500207 (Ø10) 620500208 (Ø12)	
POLYMER WITH LPG/CNG TEMPERATURE SENSOR			620500201 (Ø12) 620500202 (Ø12)	620500159 (Ø10) 620500160 (Ø12) 620500161 (Ø14)			
POLYMER FOR MP32 WITH AEB025				620500181 (Ø10) 620500182 (Ø12) 620500183 (Ø14)			



OUR TECHNOPOLYMER RAILS ARE THE RESULT OF AN EXCLUSIVE AND PATENTED TECHNOLOGY



THE INTERCHANGEABLE NOZZLES MAKE OUR RAILS INCREDIBLY VERSATILE

## TECHNICAL FEATURES

FUEL	LPG / CNG
WORKING TEMPERATURE	-20°C +120°C
IMPEDANCE	2 Ω
TYPE OF PILOT SIGNAL	PICK & HOLD
HOMOLOGATIONS TYPE	ALUMINUM – CNG: Class 1; LPG Class 2 POLYMER – Class 2
CONNECTIONS	Unmating part type SUPERSEAL 2-ways Standard connection
PROTECTION RATING OF ELECTRICAL CONNECTIONS	IP68
DIAMETER OF HOSE CLAMP FOR PIPES	10 -12 -14 mm
IDENTIFICATION, TRACEABILITY AND TYPE-APPROVAL VIA	PERMANENT DATAMATRIX LASER MARKING ON CASING

## PATENTS

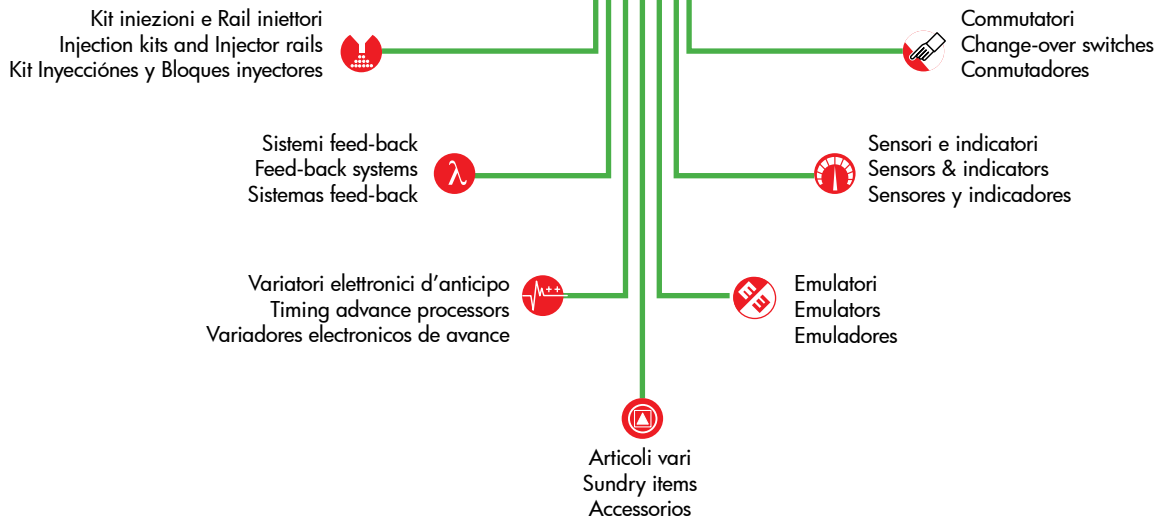
PR2006A000053  
WO 2007/141672 A1  
PR2007A000001  
PR2006A000086



## HOMOLOGATIONS

UNECE Regulation no. 10/03  
UNECE Regulation no. 67/01  
UNECE Regulation no. 110/00

SCOPRI LA GAMMA COMPLETA DEI NOSTRI PRODOTTI  
DISCOVER THE COMPLETE RANGE OF OUR PRODUCTS  
DESCUBRA LA GAMA COMPLETA DE NUESTROS PRODUCTOS



977106440 Rev.01115

**A.E.B. S.p.A.**

via dell'Industria 20 | 42025 Cavriago (RE) | Italy  
ph. +39 0522 494401 | fax. +39 0522 494410  
info@aeb.it | www.aeb.it

MADE IN ITALY

